

## Widuri

Simple, Easy and Open Ended Solution  
for ALL your IT Transformation

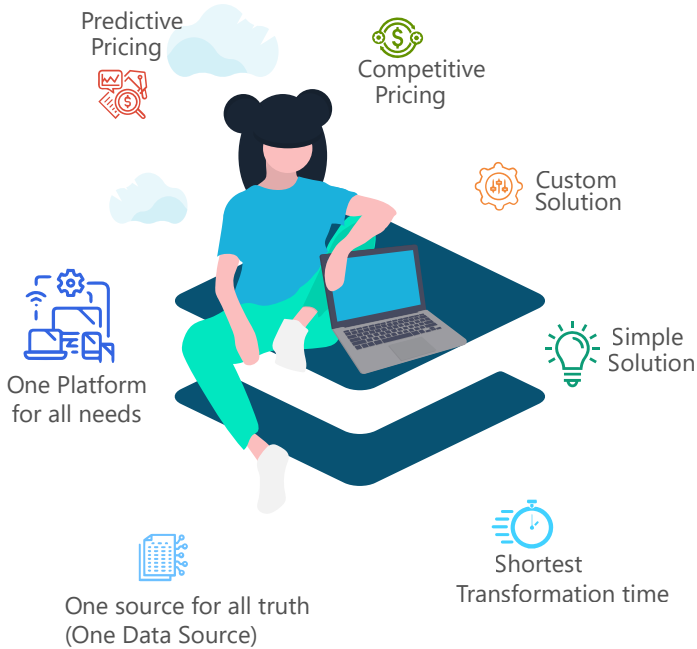


**One Platform for  
One Organization is a reality**

Exclusively custom made  
to your business

**just in 30 days**

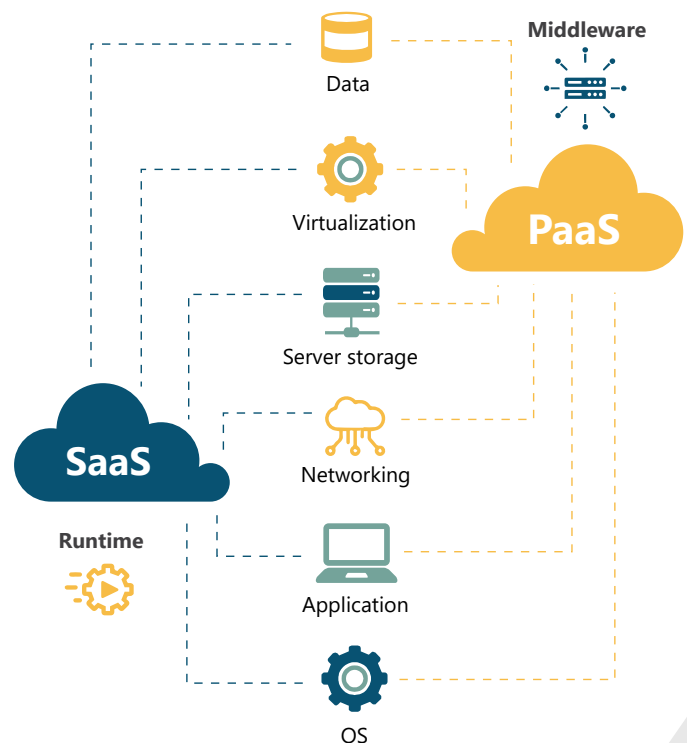
## Leaders Expectations in IT Transformation



- One Platform for all the organization requirements
- One data source for One organization
- Shortest Time Line to Go Live when compared any other solution in the market
- Custom made solution
- Competitive and Predictive Pricing

## Thus, Leaders can focus on their core businesses

- WIDUNI solution falls in the category of Software as a service' (SaaS)
- And also categorized as Platform as a service' (PaaS) as it is custom made for the specific client
- WIDUNI is the unique solution provider with this combination of SaaS and PaaS to the client
- WIDUNI is changing how IT Transformation are developed and implemented.
- Advantage of providing this combination is that organization's IT resource or Team cost



## WIDUNI caters to all the above requirement

- 30 Days E2E IT Transformation including changing from current IT system
- Solution created specific to the organization needs
- Highly scalable IT solution
- Predictive Competitive Pricing
- Zero Internal IT resource cost for the organization



## BIG DATA in purest form will be action

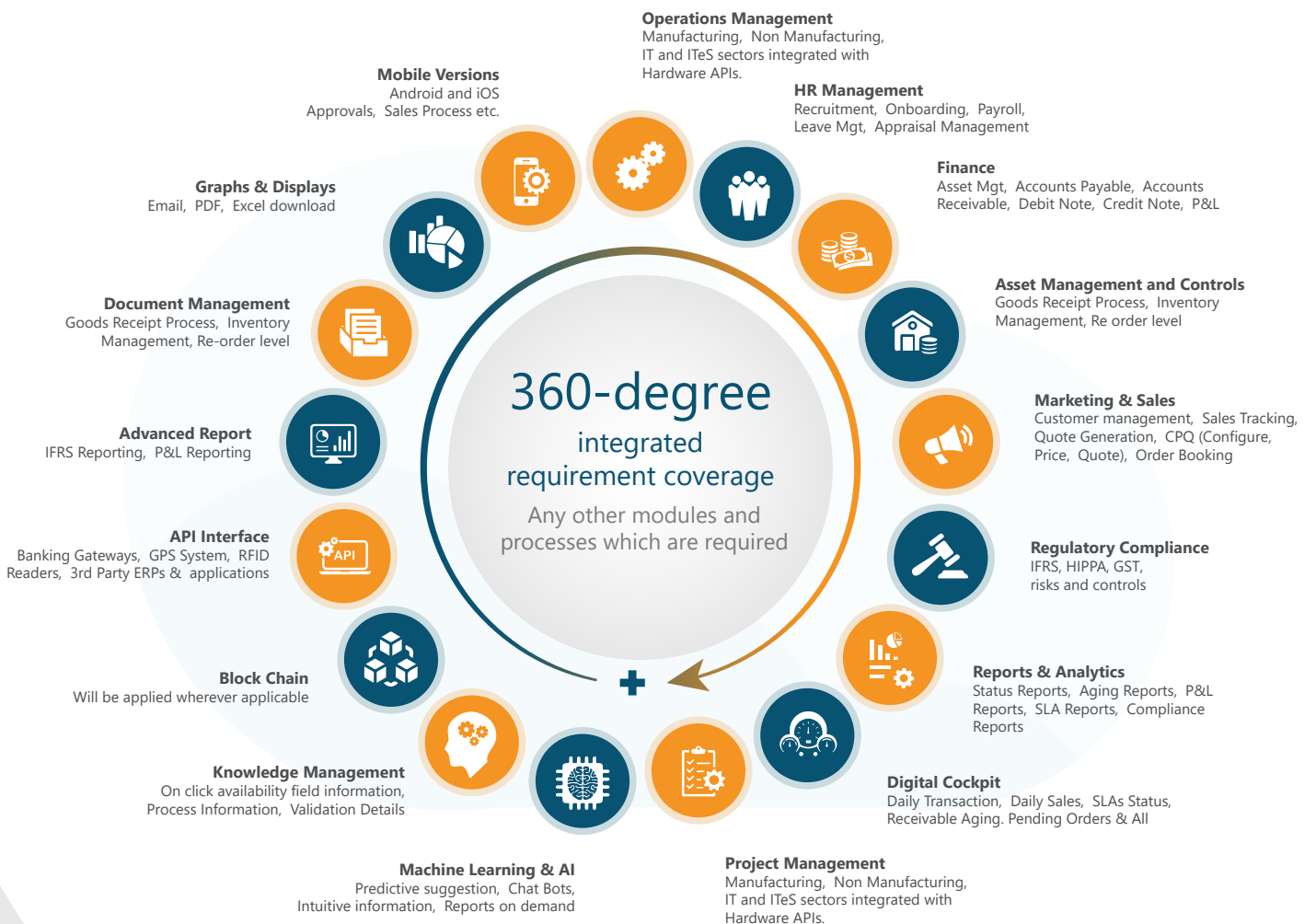


**BIG DATA**  
SIMPLIFIED

- The organization truth will be in one platform of WIDUNI. This will minimize the integration of the data from 3rd party sources
- Which means less of data massaging which will significantly improve the data quality
- Thus organization leaders will have latest possible information for accurate, strategic and tactical business decisions at right time

**DATA BASED DECISION will be a REALITY**

One Platform which is highly flexible and scalable IT Solution. 360 degree coverage of organization requirement is the need to compete in the ever changing and challenging business environment



More than 20, 000 functionalities and features in a platform with Unparalleled Scalability, Easy to Implement and Instantly Available solution



## Algorithm Based Platform

**Widuni is an algorithm based platform**

0-30 DAYS

**Widuni implementation is on Fastest Lane**

**Creating custom made modules and its inter connected processes** based on the requirement the algorithms are configured and managed

1

**Custom made approval structure** create custom approval structures for relevant processes

2

**Custom made downloadable PDFs and email notifications**  
Create relevant PDFs, email notifications, reminders, escalations

3

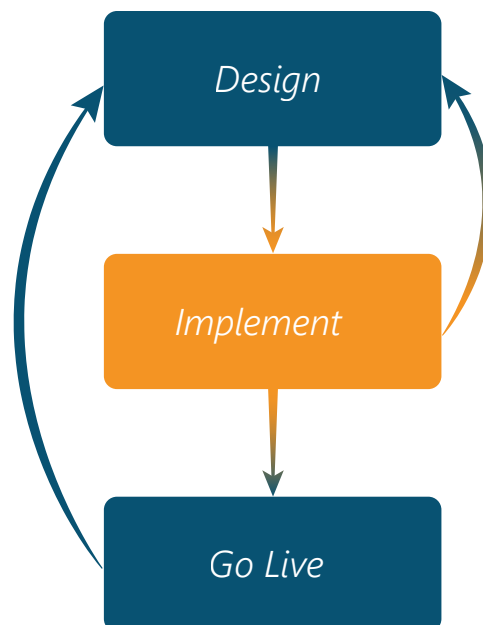
**Access Controls**  
Custom made Access Controls, Custom Made User Authentications

4

**Reports & Knowledge Management**  
Establish the report & knowledge management system

5

WIDUNI



1

**Parallel Soft Go Live**

2

**Allocate to users for acceptance**

3

**Receive Feedback**

4

**User Acceptance**

5

**HARD Go Live**

*Simple, Easy and Open Ended*



**WIDUNI gives total empowerment to the leaders with respect to IT Strategy, Implementation and according to their time line**

WIDUNI is an output of our core team's experience, which spans across organizations like ABN AMRO, ARAMEX, Canon, FICO, Tata Telecom, Perot System, KPMG, IBM, Navsite, Cordys

## Our Vision

To 'disturb' the current IT implementation framework and make the custom made IT implementation accessible to small, medium and large enterprises without compromising the fundamental objective of IT implementation which is to scale up the business by improving the effectiveness and efficiency metrics.

## About us

We at PRVIGA Solutions have embarked on the 'disruption' journey, which will make the leaders rethink the business strategies with respect to their IT solution.

We have created WIDUNI – our next generation IT solution which will be part of the 'PaaS' as well as 'SaaS' category. Which only means WIDUNI will be completely managed outside the organization but controlled by business leaders. WIDUNI will make the Software Development space so easy and cost competitive the leaders will experience that they are getting the custom made solution at the speed of the ready made product implementation. Which is a huge differentiator as in the custom made products leaders will get 100% of their requirement.

Imagine a solution which is custom made exclusively for you, delivered within 30 days irrespective of scope and complexity with relevant visualization like graphs. And top of it, the organization does not require its IT function to run WIDUNI on a day-to-day basis.

## Our Mission

Provide IT solution which is simple, easy and open ended solution which has the shortest possible Go Live time period and a transparent pricing method for all scalable requirement.

## Our Values

- Focus on customer goals
- On Time deliverable
- On Time support

## Our Pricing Differentiator

- WIDUNI is changing how IT Transformation are developed and implemented.
- As WIDUNI is SaaS and PaaS solution there is significant cost saving from the resource cost perspective
- WIDUNI can be implemented by small, medium and large enterprises
- Functionalities and Features available for all pricing model are same. This is critical differentiator
- WIDUNI with its speed of implementation; which is fastest in the market and knowledge transition features will ensure that implementation cost are kept at bare minimum.



**WIDUNI pricing model is predictable, ensures cost of scaling up the solution is transparent and documented. Importantly, WIDUNI's pricing model is not impacted by the market resource cost which is the perennial challenge with our competitors.**

## WIDUNI provide E2E custom made solutions for:

- Banking solution
- Insurance Solution
- Hospitality Services
- Food & Catering Industry
- Healthcare Services
- Heavy Vehicle Logistics
- Ready Mix Concrete Services
- Mineral & Construction material trading
- Mining Solution
- Sales & Distribution Solution
- Retail
- Construction sector
- FMCG Business
- Others

*Any Scope, Any Process, Any Complexity*



**PRVIGA**

**Prviga Solutions Pvt. Ltd.**

78,Vetri VinayakarKoil Street, Thiruvallieswarar Nagar,  
Anna Nagar West Extn, Chennai-600040, India.

[prviga.com](http://prviga.com) | [info@prviga.com](mailto:info@prviga.com) | (+91) 9940181676